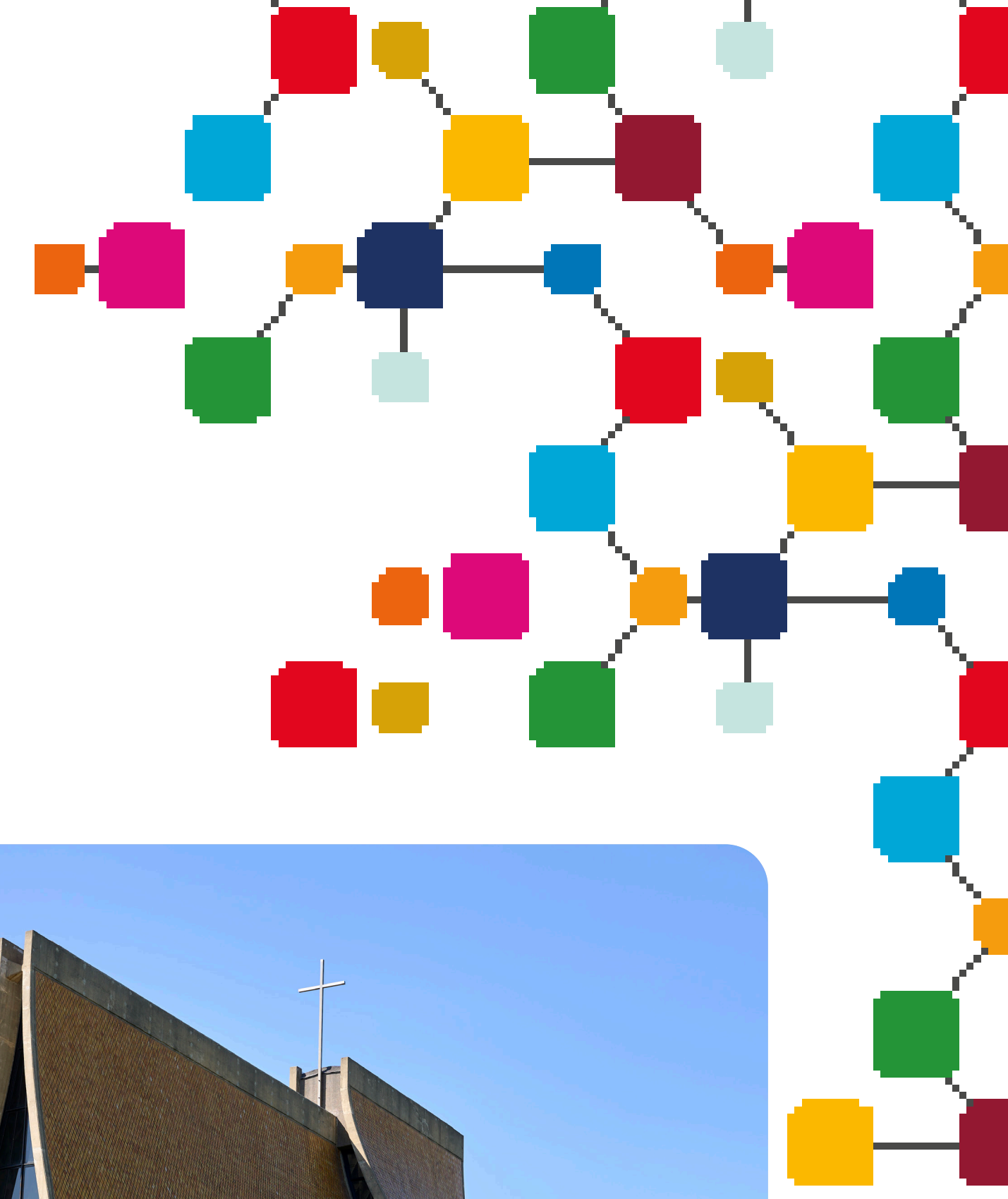


INTERNATIONAL SDG PROJECT SUSTAINABLE CITIES: BETWEEN PROGRESS AND TRADITION



RESULT REPORT

In June 2024, 15 students and three professors from the National Taipei University of Education (NTUE) and the Ming Chi University of Technology (MCUT) visited the Campus Gestaltung in Trier to take part in a project week. In November 2024, eight students and two teachers from Trier then had the opportunity to travel to Taiwan as part of a return visit. The delegation from Trier was warmly welcomed by colleagues and students in Taipei and well looked after throughout the week.

The program began with visits to the two partner universities. Prof. Dr. Jörg Sieveke gave lectures on the topics of sustainable building and the Bauhaus, while Prof. Jörg Obergröfel presented the Trier Design Campus and the courses on offer for international students. During subsequent campus tours, the guests were given an insight into the excellently equipped workshops, including areas such as 3D printing, woodworking and goldsmithing. At the same time, there was plenty of opportunity to exchange ideas with teaching staff and students from both universities. The visit program also included impressive cultural and scenic highlights in and outside Taipei.

In the capital, the group visited the National Palace Museum, the Taipei 101 skyscraper, traditional food and craft markets, important temples and the Taipei Fine Arts Museum. In Taichung, the group visited the opera house designed by Toyo Ito and the Luce Memorial Chapel by I.M. Pei was on the program. Another highlight was a visit to Sun Moon Lake, complemented by an excursion to Jiufen Old Street, which impressed with its special atmosphere and culinary diversity.

The core of the exchange was a bamboo workshop at the National Taiwan Craft Research and Development Institute. The participants started with a visit to a bamboo forest, where the growth processes of this versatile material were clearly explained. Over the following three days, they learned various processing techniques such as weaving, cutting and joining. In individual and joint projects, works such as kites, animal models and a model of Taipei 101 were created, combining solid pieces of bamboo and fine, flexible strips. Due to the positive experience with the workshop, further more in-depth collaboration with the National Taiwan Craft Research and Development Institute is already being planned for the future.

For many of the participants, this was their first visit to Asia and an unforgettable highlight of their studies. Taiwan presented itself as a technically and socially extremely progressive country. The hospitality and warmth of the hosts left a deep impression. Thanks to the newly added partner universities, even more exchanges with this fascinating country will be possible in the future.

TITLE
Sustainable Cities: Between Progress and Tradition

DEPARTMENT
Architecture
Transdisciplinary teaching/ artistic design

PARTNERS ABROAD
National Taipei University of Education (NTUE)
Ming Chi University of Technology (MCUT)

CONTACT
Prof. Dr. Matthias Sieveke
sieveke@hochschule-trier.de

